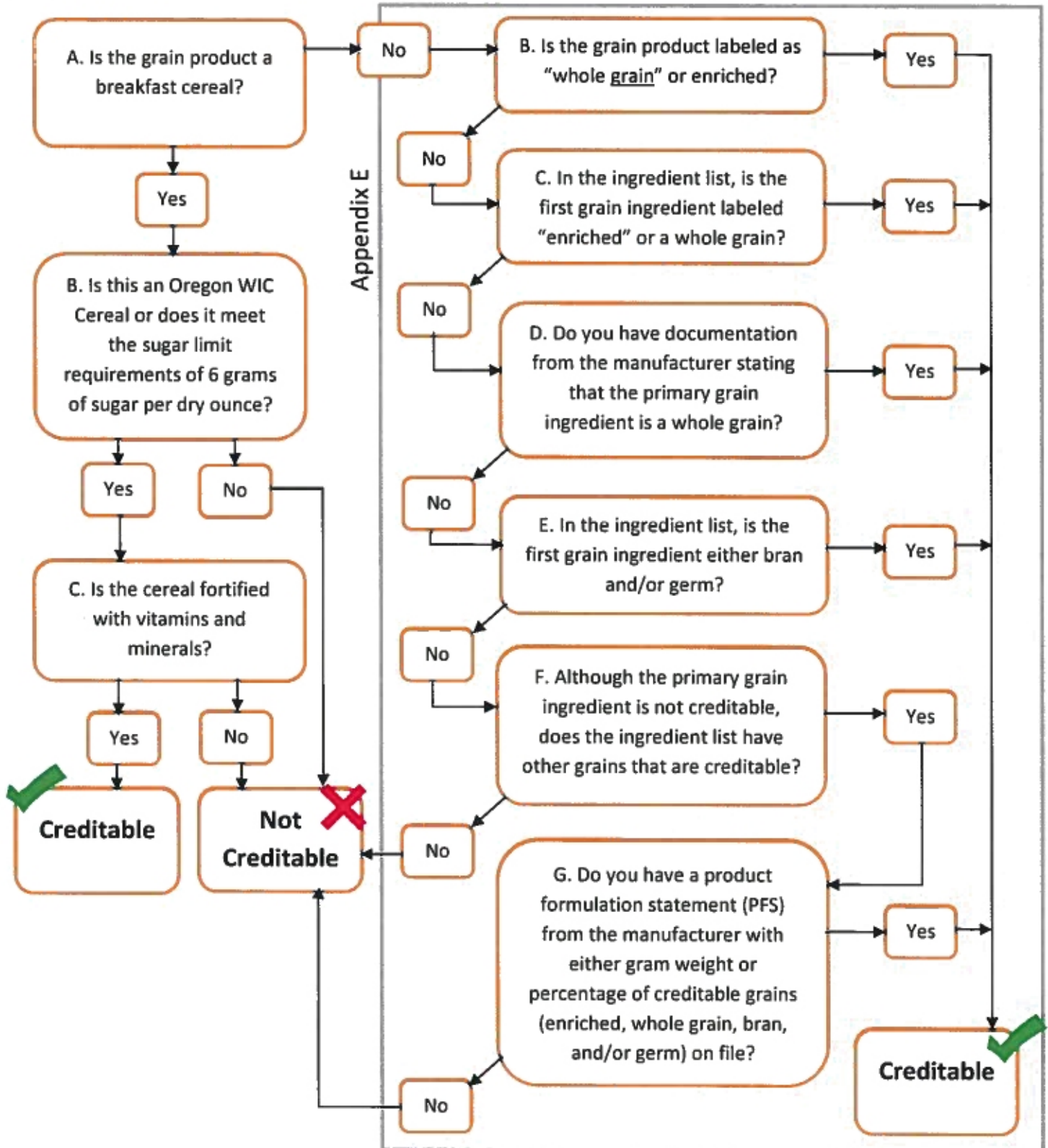


Step 1: Flow Chart for Determining Creditable Grains/Breads (Appendix E)

All grain products in CACFP must be made with enriched grain, whole grain meal or flour, or bran or germ.



Step 2: Is this grain product whole grain-rich (WGR)?

If the grain product is creditable based on Step 1, determine whether the product is also whole grain-rich by following this flowchart below.

